

CODALE

TOTAL SUPPLY SOLUTIONS

**ELECTRICAL PRODUCTS AND
EXPERTISE FOR EVERY STAGE
OF YOUR PROJECT**



CODALE

A Sonepar Company



THE CODALE ADVANTAGE

The leading full-line wholesale electrical distributor in the Intermountain West, Codale Electric Supply has proudly served the industrial, commercial, residential, institutional, lighting and voice/data/video industries since 1975.

We take pride not only in the wide range of markets that we serve- from residential, commercial, industrial, and mining, but also the vast amount of technical knowledge that we offer.

DESIGN SUPPORT | GENERAL CONSTRUCTION | PRE/POST-CONSTRUCTION SUPPORT



PROJECT LIFECYCLE

The "life cycle" of costs and benefits from initial planning through operation and disposal of a facility are critical to decision making. As an owner, you are concerned with a project "from the cradle to the grave." Codale's Total Supply Solutions approach shares this concern, and is focused on assisting you with choosing products and technologies that will allow for optimal Total Cost of Ownership (TCO) throughout life of your facility.

Our philosophy and commitment to you includes:

- We will stock whatever you want and need, as long as you will buy it from us.
- We are more than willing to explore new ways to do business together.
- We want you to want to do business with us, not look for reasons why not to.
- We will do whatever it takes to earn and retain your business.

GOING, GOING, GREEN

We offer a full line of energy-efficient LED fixtures, LED lamps, dimming and lighting controls, and occupancy sensors to help you conserve energy and keep operational costs low.

Also, as the area's only authorized Rockwell distributor, Codale is an expert in industrial automation solutions, including those designed to promote energy efficiency, like VFDs, soft starts and power monitoring systems. With the proper planning and system components, business owners can realize substantial energy savings through monitoring, analyzing and controlling their energy usage.

1. DESIGN SUPPORT

INDUSTRIAL AUTOMATION



Codale Electric Supply offers products and services aligned to serve the unique requirements of such industries as aerospace, amusement, manufacturing, mining, oil and gas, water/waste water, maintenance, repair and operations (MRO), and original equipment manufacturing (OEM). Our expertise and solutions can help you increase productivity and reduce time-to-market, while adhering to regulatory compliance and lowering your total overall costs.

DATA COMM



From tight-budget to high-end systems, Codale allies with several strategic partners to suit your needs.

LIGHTING DESIGN



With a dedicated team of lighting specialists on staff, Codale has the expertise to guide you in making the correct choice in lamps, light fixtures and lighting controls in this rapidly changing market. We carry all the latest lighting technologies and can recommend those that will perform the best for your unique application. We are the energy-saving experts and can source all of your lighting, lamp and lighting control needs.

SAFETY & TOOLS



Codale carries a wide range of safety products and tools to serve the electrical construction and maintenance industries, from equipment and tools to workwear to protect your most valuable asset - your personnel.

ENERGY EFFICIENCY & SUSTAINABILITY SOLUTIONS



From lighting, to sustainable power management equipment, to alternative energy sources, Codale Electric Supply can guide you through the many diverse energy-saving options that may be available to your organization or project. We also work closely with local utility providers and can help with energy audits, utility incentives, and a full range of solutions for your unique commercial and industrial applications.

EV CHARGING



Type 2 AC or Type 3 DC Rapid Chargers for Electric Vehicle charging solutions for government, businesses, fleets, and other organizations. Equipped with smart solutions to help manage usage and make informed decisions. Supporting Electrical Vehicles with charging stations promotes a safer environment and shows an increased environmental stewardship.

2. GENERAL CONSTRUCTION



CODALE

A Sonepar Company

TOOLS & SAFETY

From hand tools to thermal imaging, cordless power tools to heavy duty benders, Codale has you covered with the best brands. Our staff receives the most up-to-date training on the newest tools, so we can help you get the job done faster and more efficiently.

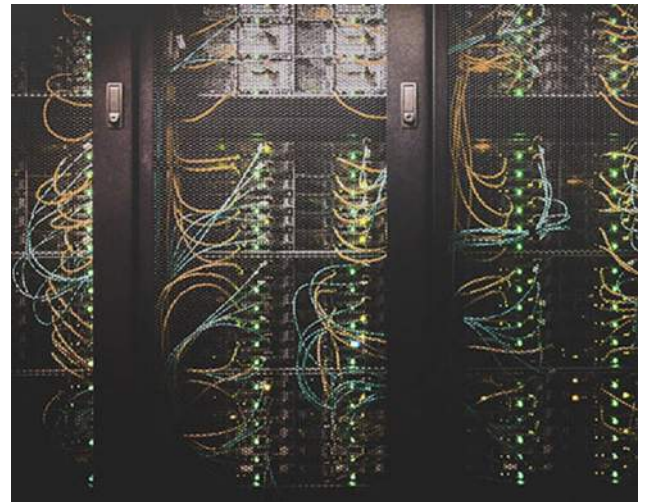
- Hand tools
- Power Tools & Accessories
- Utility Tools
- Metering
- Bending & Pulling
- Thermal Imaging
- Journeyman Tool Kits
- PPE
- Hearing & Eyes Protection
- Harnesses & Lanyards
- Respiration



DATAComm

From tight-budget to high-end systems, Codale allies with several strategic partners to suit your needs.

- Paging
- Telephone Systems
- Cat5e/Cat6/Cat6a Wiring
- Data Centers
- Fiber Optics
- Battery Backup
- CCTV (Security)
- Lighting Protection
- Cable Pathways
- Industrial Ethernet



LIGHTING & LIGHTING CONTROL

Codale Electric Supply offers all the latest lighting technologies and products and can recommend those that will perform the best for your unique application.

- LED Lighting
- Integrated Architecture
- Information Solutions
- Power & Energy Management
- Productivity Optimization
- Sustainability
- Wireless Controls
- Networked Controls



3. PRE/POST-CONSTRUCTION



CODALE

A Sonepar Company

PRODUCT TRAINING

We want to help you quickly and safely become familiar with all the electrical products and systems utilized in your project. To this end, we offer a range of product training options for your facility staff.

BUSINESS PROCESS ANALYSIS

Our diverse staff of specialists can conduct complete assessments of your business and how it utilizes systems and processes to identify areas for improvement. We work closely with your team to fully understand your operational model, what processes and tools are in place, and how effective they are. We can then provide you with recommended process and product improvements, along with the cost/benefit for implementing each change.

MAINTENANCE PROGRAM ASSISTANCE

Once your project is operational, we can assist you with planning and implementing an effective, strategic maintenance program for the various systems in your building. Let us help you coordinate some of your key facility maintenance requirements, so you can concentrate on core business objectives.

VENDOR MANAGED INVENTORY (VMI)

Codale has more than 20 years of experience in Vendor Managed Inventory (VMI) Solutions. Whether it's bin stock or locked down, your part numbers or the manufacturer's, we can customize a program that fits your needs. We can also schedule visits that fit your requirements, and our drivers always go the extra mile, keeping areas tidy while monitoring slow-or fast-moving items.

ENERGY AUDITS

Codale specialists can help you conduct an energy audit of your facility to test your building systems' performance and measure potential opportunities for energy savings. As an authorized Trade Ally with local utility providers, we can guide you through utility incentives and other energy-efficiency initiatives that will help you "save some green."



At 210,000 square feet, Codale Electric Supply's Salt Lake City Headquarters building, completed in 2009, is one of the largest and most state-of-the-art facilities of any electrical distributor in the nation.

Our headquarters building features Utah's only community-friendly "Lighting Lab," where everyone from customers, students, and industry professionals can experience first-hand the latest in lighting and lamp technologies and product offerings. The Lighting Lab is divided into distinct spaces dedicated to landscape and architectural lighting, as well as dining room, track, fluorescent, and LED lighting.



Our 151,000 square foot central distribution warehouse uses skylights and daylight harvesting technology to maximize natural light when available, saving a substantial amount (an estimated 50% annually) on electricity costs.



FLEET-FOOTED

Codale Electric Supply has more than 80 delivery trucks, running around the clock and tracked by GPS, to make sure you have the product you need, when you need it.



ORDER ONLINE

Codale's newly designed e-commerce website allows customers to place orders 24 hours a day, seven days a week, without the assistance of a sales person. They can access up-to-the-moment price and product availability, and view their account information. Reorder and search features add to an efficient and user-friendly experience.



CODALE ELECTRIC SUPPLY, INC.

Headquarters

5225 West 2400 South
Salt Lake City, UT 84120
(801) 975-7300

BRANCH LOCATIONS

Orem, UT

(801) 724-3000

Price, UT

(435) 636-2900

Elko, NV

(775) 748-4900

Ogden, UT

(801) 624-6100

St. George, UT

(435) 628-6333

Cedar City, UT

(435) 586-7681

Logan, UT

(435) 713-8200

Rock Springs, WY

(307) 922-5000

Blanding, UT

(435) 636-2950

Casper, WY

(307) 261-8900

Vernal, UT

(435) 247-1900

Las Vegas, NV

(702) 384-8500

Reno, NV

(775) 322-3400

REMINDER

CODALE ELECTRIC SUPPLY
HOLDS THE



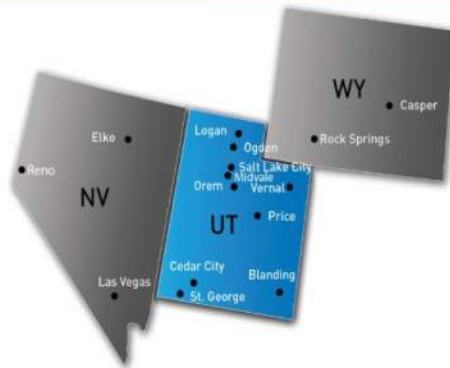
STATE OF UTAH LIGHTING &
ELECTRICAL CONTRACT:

MA3026

ALL ELECTRICAL & LIGHTING ITEMS, INCLUDING:

LAMPS
BALLASTS
FIXTURES
LIGHTING CONTROLS
AVSTTV

BATTERIES
CONDUIT
WIRE
FITTINGS
TOOLS



 **CODALE**
ELECTRIC SUPPLY, INC.

A Sonepar Company

WE ARE
YOUR SOURCE

(800) 300-6634
www.codale.com

Good till Sept 2023

Codale - Salt Lake City is a Premium Vendor in the Wattsmart Business Vendor Network

Utah - 2020

CODALE PROJECTS WITH WATTSNART BUSINESS 2019



Projects completed

35



kWh saved

2,001,451



Incentives earned

\$248,458

*Typical projects completed the previous 12 months. Lighting Instant Incentive, Small Business Direct and Custom projects are not included.

Incentives available from Rocky Mountain Power for qualifying lighting equipment.

CODALE ELECTRIC SUPPLY CAN HELP YOU FACILITATE UPGRADING YOUR CURRENT LIGHTING SYSTEMS AND OR CONTROLS USING THE LATEST IN LED TECHNOLOGIES. INCENTIVES ARE AVAILABLE AND CODALE CAN HELP YOU IN THE ENTIRE PROCESS.





Now Available at Codale Electric Supply

CPANL™ LED Flat Panel



- Switchable lumen feature
- Integrated driver
- Ultra-thin and deep-drawn housing
- Available in 1'x4', 2'x2' and 2'x4' sizes
- Multiple mounting options
- DLC* Listed

I-BEAM® XIB LED High Bay



- 12,000 - 42,000 lumens
- IP65 Rated
- Rigid cast aluminum housing
- Available in 2' and 4' lengths
- Multiple mounting options
- DLC Premium* Listed

SPANL™ LED Flat Panel



- 8,500 lumens
- 0-10V dimming
- Available in 2'x2' sizes
- Available in three optic options
360° Volumetric, 3D Center Basket,
and 3D Frame
- nLight® integrated
- DLC* Listed

RSX LED Area Light



- 7,000 to 70,000 lumens
- Four size replace 70W-100W HID
luminaires
- Super-efficient - up to 155 LPW
- Ten photometric distributions
- Eight unique mounting
configurations
- 50+% energy savings paired with
nLight® AIR

CSS LED Strip Light



- 3,000 - 10,000 lumens
- Replaces up to 75W incandescent
- Available in 4' and 8' lengths
- Available Switchable White and
Adjustable Lumen Technology
- ANSI Standard of 2.5kV Surge
Protection
- DLC* Listed

WDGE LED Wall Mount



- Four sizes replace 70W -
1000W HID luminaires
- 1,200 - 25,000 lumens
- 700K, 3000K, 3500K, 4000K
and 5000K
- 80 CRI and 90 CRI options
- Eight unique mounting
configurations
- DLC Premium* Listed

Juno SlimBasics™ LED Surface Mount Downlight



- Sleek low-profile
- Available in 5" and 7" sizes
- Available in 3000K
- Minimum 90 CRI
- ENERGY STAR® certified



Denotes Contractor Select Product

*Not all versions of this product may be DLC Premium qualified or DLC qualified. Please check the DLC Qualified Products List at www.designlights.org/QPL to confirm which versions are qualified.



Now Available at Codale Electric Supply

WF4 & WF6 LED Downlight with Switchable White



- Edge-lit LED technology
- Two remote selectable color temperature options, each with a setting choice to choose either 2700K, 3000K, and 3500K or 3000K, 4000K, and 5000K
- Polycarbonate lens provides even illumination throughout the space
- Minimum 90 CRI

TWR1 & 2 LED ALO Wall Mount



- Replaces 100W to 400W HID lamps
- Field adjustable lumen output between 1,100 and 11,800 lumens
- 4000K and 5000K
- Energy savings of 85% when replacing HID wall packs
- DLC Premium* Listed

BLT LED Center Basket Troffer



- 1,500 to 12,000 lumens
- 150+ lumens per watt
- eldoLED® 1% drivers
- Embedded wired or wireless nLight® controls
- DLC* Listed

Contact



Dennis Wood
5225 W 2400 S Salt
Lake City, UT 84120
Phone: 801-975-7300
www.codale.com



Denotes Contractor Select Product



*Not all versions of this product may be DLC Premium qualified or DLC qualified. Please check the DLC Qualified Products List at www.designlights.org/QPL to confirm which versions are qualified.



Simple, scalable, wireless
lighting control



Wireless
Hub



Wireless
Load Controls



Wireless
Sensors



Wall
Controls



Wireless
Remotes



Vive has the flexibility to meet your clients' expectations,
minimize risk, and adapt to changes during the project.

Easy code compliance | Fits within your budget

lutron.com/SpecifyVive

Model Number**Description****Vive wireless hub**

H-MOUNT-SM

Surface-mount installation adapter

HJS-0-FM

Starter Vive wireless hub, flush mount

PowPak relay module

RMJS-16R-DV-B

16A relay

RMJS-16RCCO1-DV-B

16A relay with one contact closure output

PowPak dimming module

RMJS-8T-DV-B

8A 0-10V controller-connector

RMJS-8TN-DV-B

8A 0-10V controller-flying leads

PowPak Receptacle

CAR2S-15-STR 15A

Split (half switching); single pole/downstream, 120V

CAR2S-15-DTR 15A

Duplex (dual switching); single pole/downstream, 120V

Pico

PJ2-2B-XXX-L01

2-button

PJ2-3BRL-XXX-L01

3-button with raise/lower

Pico Accessories

PICO-WBX-ADAPT

Pico wireless remote wallbox adapter

CW-1-XX

Claro 1-gang wallplate

Radio Powr Savr occupancy/vacancy sensors*

LRF2-OCR2B-P-WH

Ceiling-mount, 360° field-of-view, occupancy/vacancy sensor

Radio Powr Savr daylight sensor

LRF2-DCRB-WH

Ceiling-mount daylight sensor

* (XX in the model number represents color/finish code; use WH for White; please visit lutron.com for other color choices.) Price indicated for gloss finish products.

CODALE NOW STOCKING
THE 6", 8", AND 9.5" INNOFIT DOWNLIGHTS IN 4000K

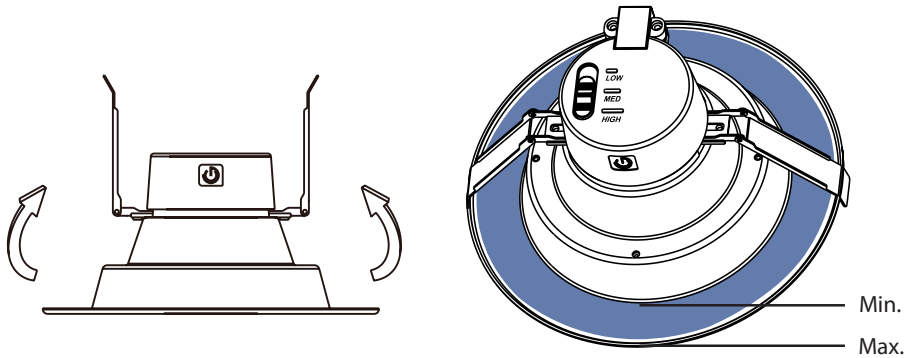
INNOFIT
SERIES

Select Drive



Easy-Fit Installation

The adjustable housing clips allow for installation in a large range of commercial and architectural housings. These spring-action clips push up easily and fit securely for both retrofit and new construction installations.

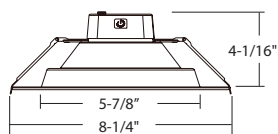


Dimensions		
Model	Aperture Min.	Aperture Max.
6"	6"	7-1/2"
8"	7-11/16"	9-7/16"
9.5"	8-11/16"	10-7/16"

CODALE NOW STOCKING
THE 6", 8", AND 9.5" INNOFIT DOWNLIGHTS IN 4000K

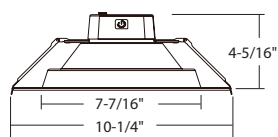


INNOFIT 6"



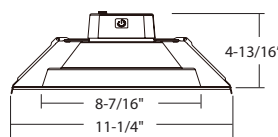
Product:	57871
Model:	21CDLA6/840/277V/R
CCT:	4000K
Power:	Select 8.5W / 13.5W / 21W
Lumens:	700 / 1000 / 1500
LPW:	82 / 74 / 71
Beam Angle:	110°
CRI:	80
Dimmability:	Non-Dimmable
Lifetime (L70):	40,000 hrs
Voltage:	120-277V

INNOFIT 8"



Product:	57876
Model:	27CDLA8/840/277V
CCT:	4000K
Power:	Select 12W / 19W / 27W
Lumens:	1000 / 1500 / 2000
LPW:	83 / 79 / 74
Beam Angle:	110°
CRI:	80
Dimmability:	Non-Dimmable
Lifetime (L70):	40,000 hrs
Voltage:	120-277V

INNOFIT 9.5"



Product:	57881
Model:	45CDLA9.5/840/277V
CCT:	4000K
Power:	Select 23.5W / 32W / 45W
Lumens:	2000 / 2500 / 3200
LPW:	85 / 78 / 71
Beam Angle:	110°
CRI:	80
Dimmability:	Non-Dimmable
Lifetime (L70):	40,000 hrs
Voltage:	120-277V

SIEMENS

Ingenuity for life

Line Card

eMobility electric vehicle solutions

Providing transportation electrification from PlugtoGrid™

usa.siemens.com/emobility

To support the increasing demand for Electric Vehicles (EV) of all kinds, Siemens is providing a comprehensive PlugtoGrid™ EV solution for all applications and markets.

Siemens has an extensive lineup of EV products and services to support any application in the residential, commercial, industrial, transportation, or government markets.

The extensive charger lineup is coupled with Siemens IoT Cloud Software as a Service (SaaS) offering an open, integrated solution from one company.

Siemens is a world leader in the EV market with an extensive lineup of AC and DC chargers, cloud-managed services and experienced personnel to help design, start-up, and support your installation.

To ensure, as technology changes, your products do not become a stranded asset, Siemens incorporates Open Charge Point Protocol (OCPP) in all products to allow customers the choice of any Electric Vehicle Service Providers (EVSP) platform without the fear of replacing chargers.

In addition to the charging hardware and services portfolio, Siemens can provide on-site backup power using our lineup of battery storage products from Fluence.



Advanced
Partner

eMobility

SIEMENS

All Rights Reserved © 2020, Siemens Industry, Inc.

Integrated electric vehicle solutions for every application

Whether it's a single family home, multifamily dwelling, parking garage, mall, or city transit project, Siemens has the experience, products, and personnel to help make your EV project a success.

The team at Siemens is ready to help design, layout, and support your EV infrastructure project. Contact your local Siemens sales representative for more details on these cutting edge products and services.

Commercial VersiCharge™ AC chargers "Level 2" (L2)



- Primarily car market
- Residential, workplace, longer-term stop areas
- 7.2 kW, 240 V
- Multiple hours to charge
- Built in USA

DC heavy-duty MDHD plug-in - MaxxHP™



- Used in fleet, eBus and depots
- Up to 150 kW high voltage
- Supports up to four dispensers
- One to four hours to charge ebus
- Built in USA

Managed service - VersiCloud



- IoT cloud management of EV assets
- Monitoring
- Billing services
- Reporting
- Demand/maximum - load control
- On-site start-up
- Project design

DC fast charger - VersiCharge Ultra™ "Level 3" (L3)



- Primarily car market
- Highway corridors, etc.
- 50 kW, 175 kW
- Half hour to charge
- Built in USA

eBus VersiCharge Apex™ and Go™ overhead chargers



- Pantograph
- Overhead – top down
- On-route and depot ceiling charging solutions
- 300 kW - 600 kW
- Minutes to charge
- Built in USA

EnergyEdge™ battery storage solutions



- **Modular storage from 250 kW and up**
- Duration (kWh) from minutes to hours
- Solar / EV Integration
- Microgrids
- EnergyEdge™ solution for EV / backup applications

Make-ready electrical infrastructure

Low, medium, and high voltage



Published by Siemens Industry, Inc. 2020

Siemens Industry, Inc.
3617 Parkway Ln.
Peachtree Corners, GA 30092

For more information, including service or parts, please contact our Customer Support Center. Phone: +1 (800) 333-7421

usa.siemens.com/eMobility
Article No. SIDS-B40013-00-4AUS
Printed in USA
All Rights Reserved
© 2020, Siemens Industry, Inc.

The technical data presented in this document is based on an actual case or on as-designed parameters, and therefore should not be relied upon for any specific application and does not constitute a performance guarantee for any projects. Actual results are dependent on variable conditions. Accordingly, Siemens does not make representations, warranties, or assurances as to the accuracy, currency, or completeness of the content contained herein. If requested, we will provide specific technical data or specifications with respect to any customer's particular applications. Our company is constantly involved in engineering and development. For that reason, we reserve the right to modify, at any time, the technology and product specifications contained herein.

SOLUTION

ELECTRIC VEHICLE CHARGING



A MARKETING PARTNER FOR
CHARGEPOINT

We have everything you need for
all your EV charging projects,
knowledge included!

NEED A QUOTE?

- + Contact your local Account Representative at:
- + Request a formal quote by emailing your bid requirements to:

WE ALSO STOCK...

- + Panels
- + Breakers
- + Enclosures
- + Grounding & fasteners
- + Conduit & wire
- + Sealant
- + PPE, tools and test equipment
- + ... and much more!



ChargePoint is the market leader in EV charging operating the largest and most open network in the world with best-in-class hardware and advanced cloud-based services.

Together, we are focused on helping you improve your efficiency and profitability in addressing the rapidly growing demand for EV charging.

Why look further? Get started today




We have the solutions, materials and expertise you need to make your next EV charging project the smoothest one yet:

- + Best in class ChargePoint EV charging stations and services
- + All electrical supplies you need
- + Product experts, inventory management, online ordering
- + ChargePoint Certified Installer online course (free, takes 60-90 minutes to complete)



ChargePoint CT4000 EV charging station at a workplace

Whatever Your Customers' Needs, ChargePoint Has the Right Station for You

	CT4000 	CPF50 	Express 250 
Application	All-purpose charging for employees, customers, residents or fleets. Set charging fees by time, session, kWh or any combination thereof	Fleet depot charging and personal charging at multi-family homes	Fast charging for short dwell time parking and freeway corridor locations where drivers need to quickly recharge
Charging Speed	Level 2 adds up to 25 RPH (miles of Range Per Hour)	Level 2 adds up to 25 RPH (miles of Range Per Hour)	DC Fast adds up to 250 RPH (miles of Range Per Hour)
Access	Public & Private	Private Only	Public & Private
Pricing	Advanced Pricing	Usage-based Pricing Only	Advanced Pricing
Required Network Plan	Commercial Plan	Fleet Plan or Multi-Family Home Service	Commercial Plan
Certification	ENERGY STAR® and UL listed	ENERGY STAR® and UL listed	UL listed



Contact Us

To learn more about ChargePoint solutions:



Features

- Architectural Bronze and Safety Blue Standard Colors are Pleasing in all Settings
- UL 1598 Listed for Outdoor Installations
- ADA Compliant
- Durable Powder-coated Epoxy Finish to Withstand the Harshest Environments
- Custom Colors and Graphics are Available
- Wind Speed Rated @ 140 MPH*

GAI-TRONICS' 234 series RED ALERT Tower is part of a completely integrated emergency communications station. Designed for remote or high-risk areas, the tower provides solutions to security concerns for:

- College campuses
- Parking garages
- Sports arenas
- Transit platforms
- Shopping malls

The tower is designed to accommodate GAI-TRONICS' RED ALERT flush-mount telephones. The communication tower is easily located by potential users because it stands over nine feet tall, with large EMERGENCY graphics on all four sides. The highly visible model 540-001 LED Strobe, with "constant on" light, mounts on top of the tower for quick location identification. Additionally, an LED panel light illuminates the surface of the telephone for nighttime use.

The 234's design permits installation in the most demanding environments. It carries a standard 140 MPH wind speed (V_{ult}) rating when installed per the model 84504-301 Installation Kit instructions.

Note: The Model 234 RED ALERT Tower is not compatible with RED ALERT® surface-mount or retrofit telephones.

* Ref.: • AASHTO LTS6 Risk Category II
• International Building Code

